

Includes **NEW**
image capture option



Mantis

Stereo Viewing Systems

Superior imaging for a wide range of inspection & rework tasks

- Patented optical technology for fatigue-free viewing and superb image quality
- Wide range of magnification options (to x20)
- Long working distances; large depths of field
- Shadow-free true colour LED illumination

Mantis Compact is a high value, low investment stereo viewer excelling in the low magnification range for inspection or manipulation tasks where bench magnifiers have traditionally been used.

Patented optical technology allows operators freedom of head movement for superb ergonomics and hand-eye co-ordination, with the ability to wear glasses if required. Operators can increase productivity and improve quality, at an affordable price.

- High value, low investment system
- Superior ergonomics for improved productivity and increased throughput
- Long working distances for easy sample manipulation and rework
- x2, x4, x6 and x8 quick change objectives
- Bright white, true colour, LED illumination providing up to 10,000 hours of shadow-free viewing
- Superb hand-eye co-ordination for inspection and manipulation tasks
- Patented eyepieceless optics maximise head freedom providing superb ergonomics and reduced eye fatigue



Mantis Compact, with counter-balanced universal stand, for flexibility and ease of use.



High stability bench stand, with integral focus and dimmable substage illumination.



Articulated arm, designed specifically for applications requiring extended reach, without compromising stability.

Options



Floating Stage

Provides smooth and sensitive control allowing for samples to be accurately inspected. For use with bench stand only.



UV Lighting

For UV inspection applications and fast and accurate fault detection.



Secondary Link Arm

A secondary link increases total reach of articulated arm to 847.5mm and provides added flexibility and manoeuvrability.



Floor Stand

Ideal for inspection where subjects are immobile or require a standing position. For use in conjunction with articulated arm. Lift, swing, tilt and rotate capability.

Optical Data

Objective Lenses	Working Distance	Field of View
x2	167mm	45.0mm
x4	96mm	27.5mm
x6	73mm	19.2mm
x8	58.5mm	14.3mm

Accessories

Lens protection caps
Dust cover
Replacement LED array

Mantis Elite is a high performance stereo microscope, offering superb optical performance with magnification options up to x20, making it a perfect alternative to more traditional stereo microscopes.

Large fields of view and generous working distances allow for a wide range of inspection, preparation and manipulation tasks to be carried out, all with exceptional hand-eye co-ordination.



Mantis Elite, with counter-balanced universal stand for flexibility and ease of use.



Articulated arm, designed specifically for applications requiring extended reach, without compromising stability.

Optical Data		
Objective Lenses	Working Distance	Field of View
x2	160mm	57.0mm
x4	96mm	34.0mm
x6	68mm	23.0mm
x6 SLWD*	112mm	20.0mm
x8	59mm	17.0mm
x10	54mm	13.5mm
x15	40mm	8.8mm
x20	29mm	6.5mm

Accessories
Lens protection caps
Dust cover
Replacement LED array

* cannot be used together with x2 or x20 lens

- High value, high specification patented design with superb optical performance
- x2 - x20 magnification options with quick change turret allows users to switch between low magnification inspection and high magnification fine detail tasks
- Patented eyepieceless optics maximise head freedom providing superb ergonomics and minimal eye fatigue
- Superior ergonomics for improved productivity and increased throughput
- Superb hand-eye co-ordination for inspection and manipulation tasks
- Bright white, true colour, LED illumination providing up to 10,000 hours of shadow-free viewing
- Long working distance and large field of view for easy sample manipulation and rework



High stability bench stand with integral focus, dimmable substage illumination and floating stage (optional).

Options



Floating Stage

Provides smooth and sensitive control allowing for samples to be accurately inspected. For use with bench stand only.



Episcopic Illuminator

Through-the-lens illumination for the inspection of bore holes and complex internal/external features. Iris control for precise light positioning.



UV Lighting

Switchable UV-white light illumination for UV inspection applications and fast and accurate fault detection.



Secondary Link Arm

A secondary link increases total reach of articulated arm to 847.5mm and provides added flexibility and manoeuvrability.



Floor Stand

Ideal for inspection where subjects are immobile or require a standing position. For use in conjunction with articulated arm. Lift, swing, tilt and rotate capability.

Mantis Elite-Cam is a variant of the successful Mantis Elite stereo microscope, with internally integrated USB2.0 camera allowing effortless image capture and documentation.

Mantis Elite-Cam comprises of a standard Mantis Elite, with a factory-integrated digital camera, bringing image capture capabilities to the outstanding eyepieceless optics of Mantis. Mantis Elite-Cam offers superb optical performance with the ability to capture and archive images effortlessly.

NEW



Competitively priced Mantis Elite-Cam complete with integrated USB2.0 camera*

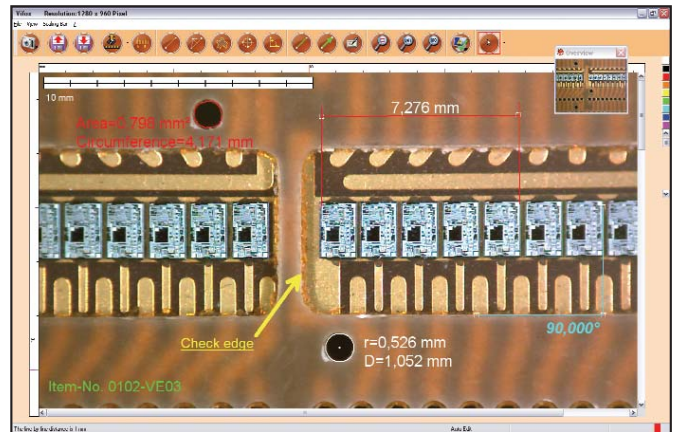
- Comprises of a Mantis Elite optical head, with factory integrated and sealed high resolution† USB2.0 camera
- Permanently engaged digital camera permits simultaneous optical and digital viewing
- Image projection capability ideal for training purposes
- USB2.0 connectivity with easy-to-use PC-based software
- Simple image capture software allows for storage, reference and electronic communication
- Variety of image capture formats including: BMP, JPEG and PNG
- Compatible with all Mantis Elite options & accessories

Optical Data
See Mantis Elite

Elite-Cam includes
USB cable, 1 metre Standard image capture software Installation CD

* PC not supplied
† Please contact us for current specification

Vifox Software Option



Vifox imaging software includes:
2D measurement functions, comprehensive measuring options, clear graphic presentation, simple calibration, with scale bars and labelling.

Vifox is an **Imaging Acquisition and Measurement** software solution for Mantis Elite-Cam, providing fast, precise imaging of your samples and components.

The intuitive Vifox software allows you to easily set key parameters whilst viewing the live image. Then simply capture, document and archive your images - the best pictures in the shortest time! Vifox can also measure (2D) lines, circles, areas, angles and more, with clear graphic presentation and simple calibration.

- On-screen settings for immediate results
- Images can be stored as JPG, BMP, or PNG
- Single cable data transfer
- Crosshair displayed as overlay
- 2D measurement of lines, circles, areas, angles and more...
- Includes stage micrometer for calibration purposes
- Array of features, including: scalebar in various displays, online value preview, digital zoom, show ruler, colour settings for lines and labels, draw arrows and text, layer functionality



Mantis... Compact, or Elite?

Vision Engineering has designed and manufactured world leading optical systems since 1958.

The Mantis family is a unique range of patented optical systems without eyepieces, for intricate tasks requiring superb quality viewing over long periods of time.

Mantis is in use in tens of thousands of sites worldwide and has become the accepted standard for ergonomics and high performance magnification.

Mantis Compact

Mantis Compact excels in the low magnification range for inspection or manipulation tasks where bench magnifiers have traditionally been used. Mantis Compact has a small footprint and low investment cost giving a superb price/performance ratio.

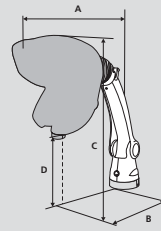


Mantis Elite

Mantis Elite has enhanced optical performance, including higher magnification, a large field of view plus long working distances, making it a perfect alternative to traditional stereo microscopes for a wide range of inspection, preparation and manipulation tasks requiring hand-eye co-ordination. Mantis Elite also has an enhanced range of options, including digital image capture with the Mantis Elite-Cam variant.



Universal Stand



Mantis Compact

Dimensions:
A = 565mm - 775mm
B = 335mm - 545mm
C = 395mm - 605mm
D = 110mm - 320mm

Unpacked weight:
Head 2.1kg Stand 3.3kg

Packed weight:
Head 4.1kg Stand 4.6kg

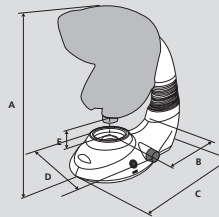
Mantis Elite

Dimensions:
A = 593mm - 802mm
B = 352mm - 622mm
C = 415mm - 624mm
D = 103mm - 312mm

Unpacked weight:
Head 3.0kg Stand 3.3kg

Packed weight:
Head 5.0kg Stand 4.6kg

Bench Stand



Mantis Compact

Dimensions:
A = 526mm - 641mm
B = 198mm
C = 487mm
D = 305mm
E = 123mm - 238mm

Unpacked weight:
Head 2.1kg Stand 4.5kg

Packed weight:
Head 4.1kg Stand 7.9kg

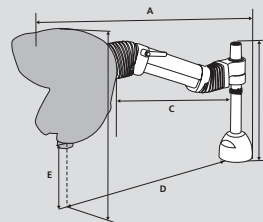
Mantis Elite

Dimensions:
A = 538mm - 653mm
B = 198mm
C = 487mm
D = 305mm
E = 122mm - 237mm

Unpacked weight:
Head 3.0kg Stand 4.5kg

Packed weight:
Head 5.0kg Stand 7.9kg

Articulated Arm



Mantis Compact

Dimensions:
A = 880mm
B = 430mm
C = 510mm
D = 650mm
E = 290mm

Unpacked weight:
Head 2.1kg Stand 11kg

Packed weight:
Head 4.1kg Stand 13.5kg

Mantis Elite

Dimensions:
A = 880mm
B = 430mm
C = 510mm
D = 650mm
E = 290mm

Unpacked weight:
Head 3.0kg Stand 11kg

Packed weight:
Head 5.0kg Stand 13.5kg

Illumination

Note: All Mantis use a 9V DC external plug transformer, available in all worldwide plug configurations.

Mantis Compact

Lighting Data		
Light intensity measured at subject plane with colour correction filters.		
20 LEDs	9,400 LUX	Up to 10,000 hours
Substage illumination (bench stand only)		
13 LEDs	1,200 - 4,000 LUX	Up to 10,000 hours

Mantis Elite

Lighting Data		
Light intensity measured at subject plane with colour correction filters.		
24 LEDs	11,000 LUX	Up to 10,000 hours
Substage illumination (bench stand only)		
13 LEDs	1,200 - 4,000 LUX	Up to 10,000 hours



FM 557119

Vision Engineering Ltd has been certificated for the quality management system ISO 9001:2008.



Vision Engineering manufacture a comprehensive range of ergonomic stereo microscopes as well as a complete line of optical and video non-contact measuring systems.

For more information...

Vision Engineering has a network of offices and technical distributors around the world. For more information, please contact your Vision Engineering branch, local authorised distributor, or visit our website.

Vision Engineering Ltd.
(Manufacturing)
Send Road, Send,
Woking, Surrey, GU23 7ER, England
Tel: +44 (0) 1483 248300
Email: generalinfo@visioneng.com

Vision Engineering Ltd.
(Commercial)
Monument House, Monument Way West,
Woking, Surrey, GU21 5EN, England
Tel: +44 (0) 1483 248300
Email: generalinfo@visioneng.com

Vision Engineering Inc.
(Manufacturing & Commercial)
570 Danbury Road, New Milford,
CT 06776 USA
Tel: +1 (860) 355 3776
Email: info@visioneng.com

Vision Engineering Inc.
(West Coast Commercial)
745 West Taft Avenue, Orange,
CA 92865 USA
Tel: +1 (714) 974 6966
Email: info@visioneng.com

Vision Engineering Ltd.
(Central Europe)
Anton-Pendele-Str. 3,
82275 Emmering, Deutschland
Tel: +49 (0) 8141 40167-0
Email: info@visioneng.de

Vision Engineering Ltd.
(France)
ZAC de la Tremblaie, Av. de la Tremblaie
91220 Le Plessis Paté, France
Tel: +33 (0) 160 76 60 00
Email: info@visioneng.fr

Vision Engineering Ltd.
(Italia)
Via Cesare Cantù, 9
20092 Cinisello Balsamo MI, Italia
Tel: +39 02 6129 3518
Email: info@visioneng.it

Nippon Vision Engineering
(Japan)
272-2 Saedo-cho, Tsuduki-ku,
Yokohama-shi, 224-0054, Japan
Tel: +81 (0) 45 935 1117
Email: info@visioneng.jp

Vision Engineering Ltd
(China)
11J, International Ocean Building,
720 Pudong Avenue, Shanghai,
200120, P.R. China
Tel: +86 (0) 21 5036 7556
Email: info@visioneng.com.cn

Vision Engineering
(S.E. Asia)
Tel: +603 80700908
Email: info@visioneng.asia

Vision Engineering
(India)
Email: info@visioneng.co.in

Distributor



Visit our multi-lingual website:

www.visioneng.com